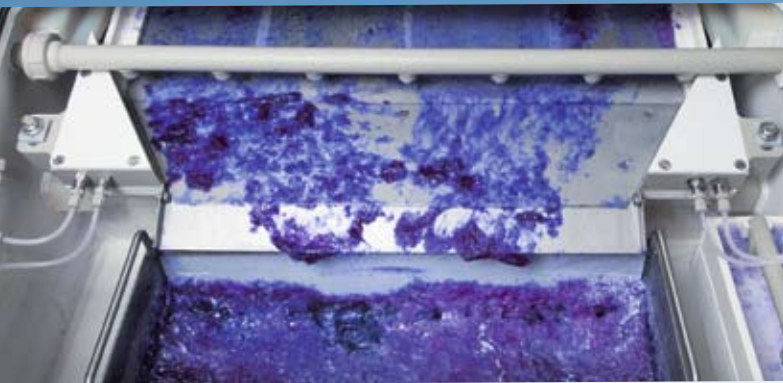


PCB / PCM

Höllmüller EVOLUTION

Stripping

R | E | N | A | ●



Residue-free Stripping of high aspect ratio structures

Fast removal of the stripped resist is guaranteed with our state of the art integrated collection unit.

Areas of application

- Photo resist and tin stripping on PCB and other surfaces
- For KOH, NaOH and commercial strippers
- Flexible and reel to reel applications available

Features and benefits

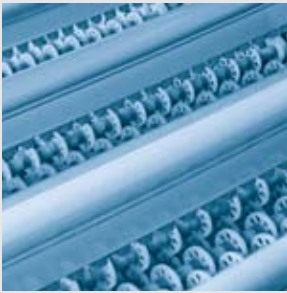
Resist Stripping

- Resist removal by sloped, vibrating mesh unit
- Inline nozzle protection by quick release inline filters
- Collection unit with two separated baskets to assure dry resist
- Integrated post stripper section
- Optional: High pressure section

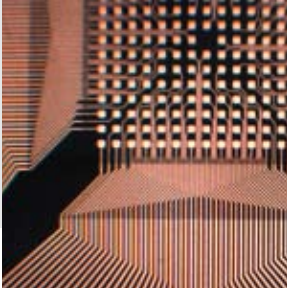
Tin Stripping

- Optimal treatment of high aspect ratio holes
- High impingement spray-flood bars with 34 nozzles
- Inline filtration with quick release 80 µm bag filters with safety switch
- Draining by pump at lowest point to avoid built-up of sludge
- > 750 stripping machines installed world wide





Sn-strip
spray-flood bars



ultra fine
line structures



Technical Data Höllmüller EVOLUTION - Stripping

Process	• Stripping of different resists and tin stripping					
	• Rinsing					
	• Drying					
	• Dwell time	resist 90 - 100 sec	(for 1.5 mil resist)			
	tin 60 sec					
	• Process Temperature	45 - 60°C (113 - 140°F)				
Dimensions	• Typical PCB applications					
	• Transport Speed	0.5 (1.65)	1.0 (3.3)	1.5 (4.9)	2.0 (6.6)	m/min (feet/min)
	• Width	1550 (61)	1550 (61)	1550 (61)	1550 (61)	mm (inch)
	• Length for inner layer	4263 (168)	5688 (224)	6438 (254)	8008 (315)	mm (inch)
	• Length for outer layer	4355 (172)	5980 (235)	6730 (265)	7960 (313)	mm (inch)