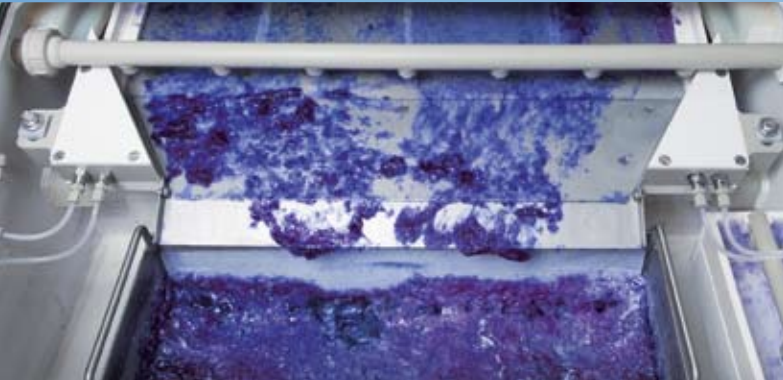


## PCB / PCM

**Höllmüller** EVOLUTION  
Stripping

R | E | N | A | ●



## Residue-free Stripping of high aspect ratio structures

Fast removal of the stripped resist is guaranteed with our state of the art integrated collection unit.

### Areas of application

- Photo resist and tin stripping on PCB and other surfaces
- For KOH, NaOH and commercial strippers
- Flexible and reel to reel applications available

### Features and benefits

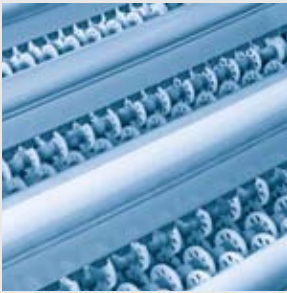
#### Resist Stripping

- Resist removal by sloped, vibrating mesh unit
- Inline nozzle protection by quick release inline filters
- Collection unit with two separated baskets to assure dry resist
- Integrated post stripper section
- Optional: High pressure section

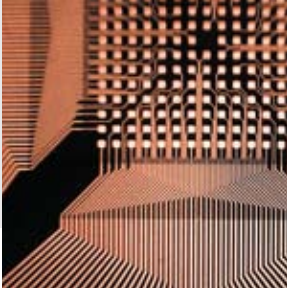
#### Tin Stripping

- Optimal treatment of high aspect ratio holes
- High impingement spray-flood bars with 23 nozzles each
- Inline filtration with quick release 80 µm bag filters with safety switch
- Draining by pump at lowest point to avoid built-up of sludge
- > 750 stripping machines installed world wide





Sn-strip  
spray-flood bars



ultra fine  
line structures



## Technical Data Hölmüller EVOLUTION - Stripping

Process	• Stripping of different resists and tin stripping						
	• Rinsing						
	• Drying						
	• Dwell time	resist	90 - 100 sec	(for 1.5 mil resist)			
	tin	60 sec					
	• Process Temperature	45 - 60°C (113 - 140°F)					
Dimensions	• Typical applications						
	• Transport Speed	0.5 (1.65)	1.0 (3.3)	1.5 (4.9)	2.0 (6.6)	m/min (feet/min)	
	• Width	1550 (61)	1550 (61)	1550 (61)	1550 (61)	mm (inch)	
	• Length	resist strip	4225 (166)	5175 (204)	6225 (245)	7775 (306)	mm (inch)
		tin strip	3450 (136)	4225 (166)	5100 (201)	6300 (248)	mm (inch)